

## PROPERCILLIN™

### Presentation:

Procaine penicillin 300g/L, HDPE vial 100/250/500 ml with rubber stopper and aluminium seal. Cardboard carton 100/250/500 ml.

### Indications:

For the treatment of infections caused by bacteria sensitive to penicillin, in cattle, sheep, horses, pigs, dogs and cats.

### Warnings and Contra-indications:

Do not use in animals with known sensitivity to penicillin. Do not use when known penicillinase producing bacteria are present. Do not use in pregnant sows. Procaine penicillin has been associated with abortion.

Propercillin™ is not generally toxic at recommended dosage rates. However, pigs suffering from erysipelas or leptospirosis, especially pregnant sows, may be at risk to procaine toxicity if products containing procaine penicillin are used.

Do not use in very small herbivores such as rabbits and guinea pigs.

Occasional allergies and hypersensitivity to penicillin are reported, but such reactions are

rare. Local reaction at the site of injection may occur, especially in horses.

### Details of Use:

Penicillin is bactericidal to gram-positive organisms by inhibiting bacterial cell-wall synthesis. The procaine penicillin salt is only moderately soluble. Following injection, therapeutic blood levels are maintained for about 24 hours.

### SHAKE WELL BEFORE USE

For intramuscular or subcutaneous injection. Injection in food producing animals to be given by deep intramuscular injection in the anterior half of the neck.

The general dose rate for cattle, sheep, horses and pigs, is 4-8ml/100kg, (providing 12,000-24,000 IU procaine penicillin per kg.)

The dose rate for dogs and cats should be higher at 0.5 -0.6ml/5kg.

Cattle, sheep, pigs, horses – 4-8ml/100kg I/M.

Dogs – 1ml/10kg I/M of S/C.

Cats – 0.5ml/5kg I/M or S/C.

The dosage should be repeated at 24 hourly intervals for 3 days, or as decided necessary by a veterinarian.

### Withholding Period:

Meat: Animals producing meat and offal for human consumption must not be slaughtered

## PROPERCILLIN™ (CONT)

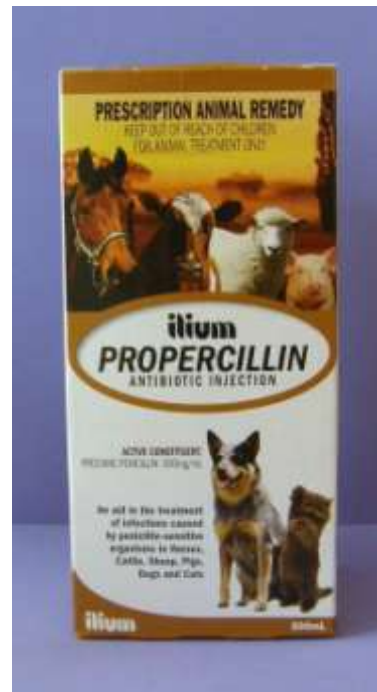
during or within 5 days of the last treatment.  
Horses: 63 days after the last treatment.  
Milk: Milk intended for human consumption must be discarded during treatment and for 48 hours following the last treatment. An additional 12 hours must be added for each further treatment to a maximum of 72 hours.  
Sheep milk intended for human consumption must be discarded during treatment and for 35 days following the last treatment.  
Approved shelf life of formulated product 18 months.

Registered pursuant to the ACVM Act 1997,  
No A10101

### RESTRICTED VETERINARY MEDICINE

Propercillin™

For Animal Treatment Only



Ethical Agents Veterinary Marketing Ltd, 54 Hobill Ave, Manukau, 2104, New Zealand.  
P O Box 97110, Manukau City, Manukau, 2241, New Zealand.  
Telephone 64-9-262 1388, Fax 64-9-262 1411, Freephone 0800 800 624.  
E-mail [eage@xtra.co.nz](mailto:eage@xtra.co.nz), Website [www.ethicalagents.co.nz](http://www.ethicalagents.co.nz).

